

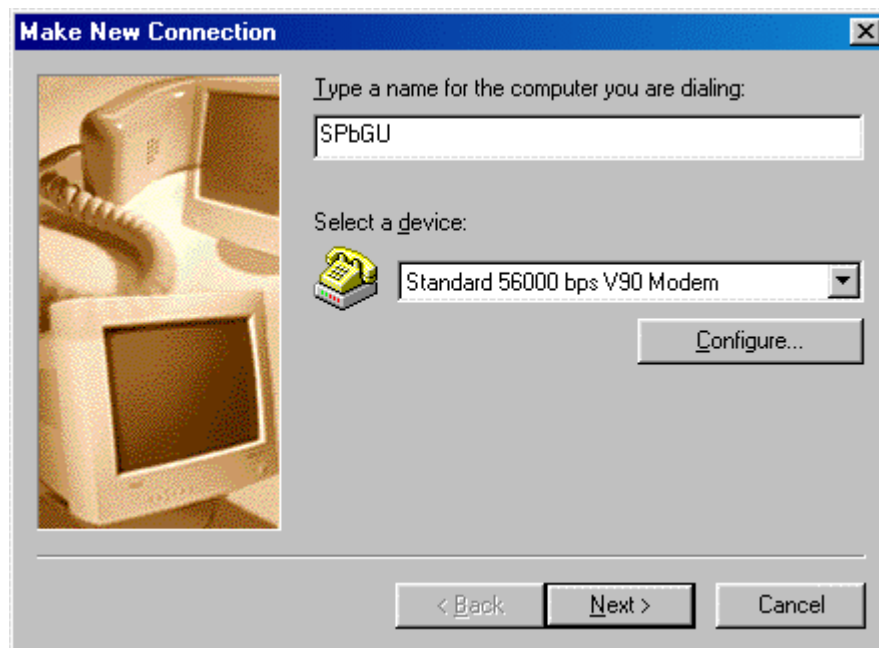
1. Making a new Dial Up connection for SPbGU

In order to make a new dial up connection double click My Computer and then Dial-Up Networking (Picture.1). Inside that window you will find the Make New Connection icon which will guide you through the rest of the connection creation process.



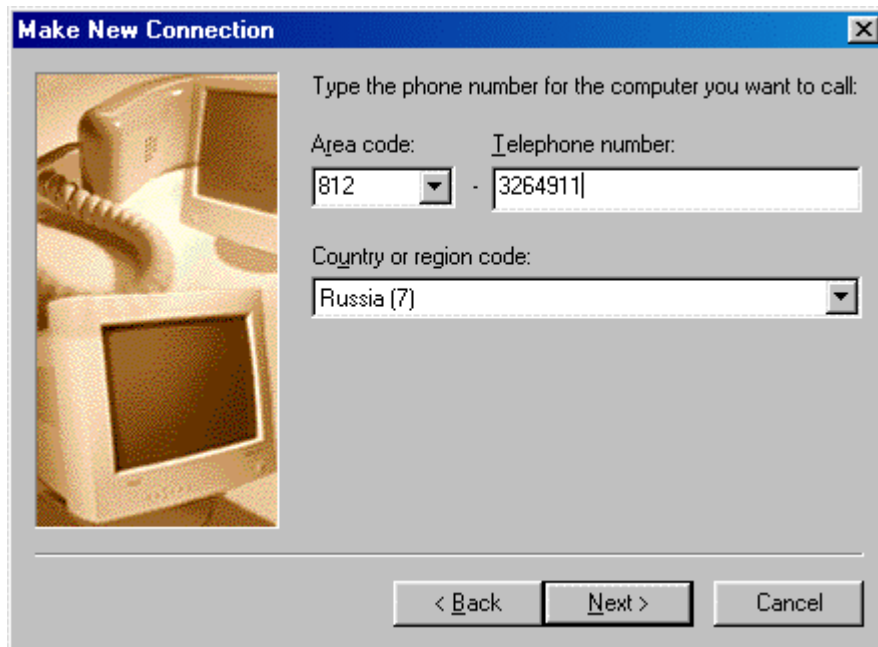
Pic.1

Double click the Make New Connection icon. This will start the following dialog window (Picture. 2).



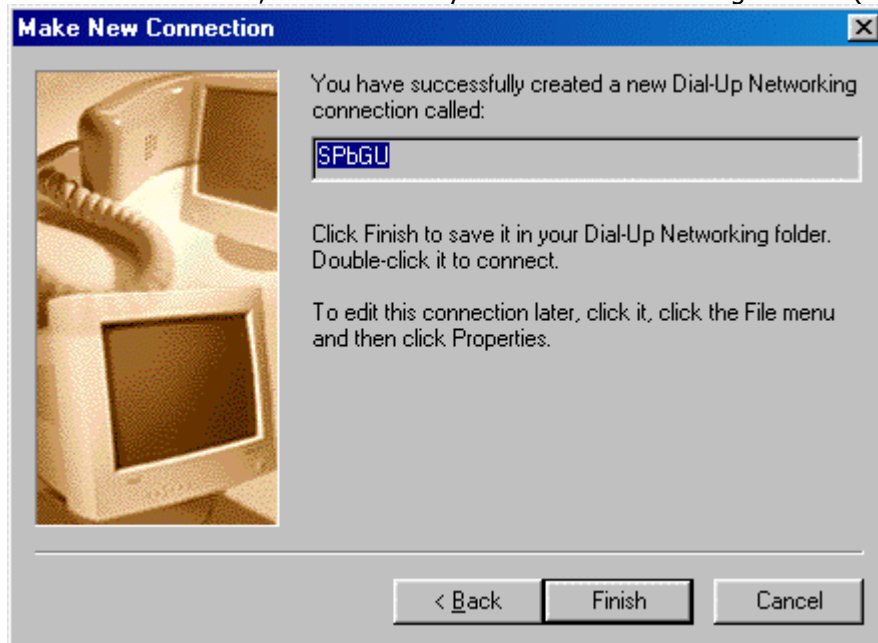
Pic. 2

Here you must enter the new Dial-Up connection name (SPbGU in this case) and select the modem that is connected to your computer. Then click next (Picture. 3).



Pic. 3

This dialog window allows you to select the area code and country code and also the telephone number that you will use to connect to SPbGU. When done, click Next and you will see the following window (Picture. 4).



Pic. 4

Click Finish. The new connection appears in the Dial-Up Networking window (Picture. 5).



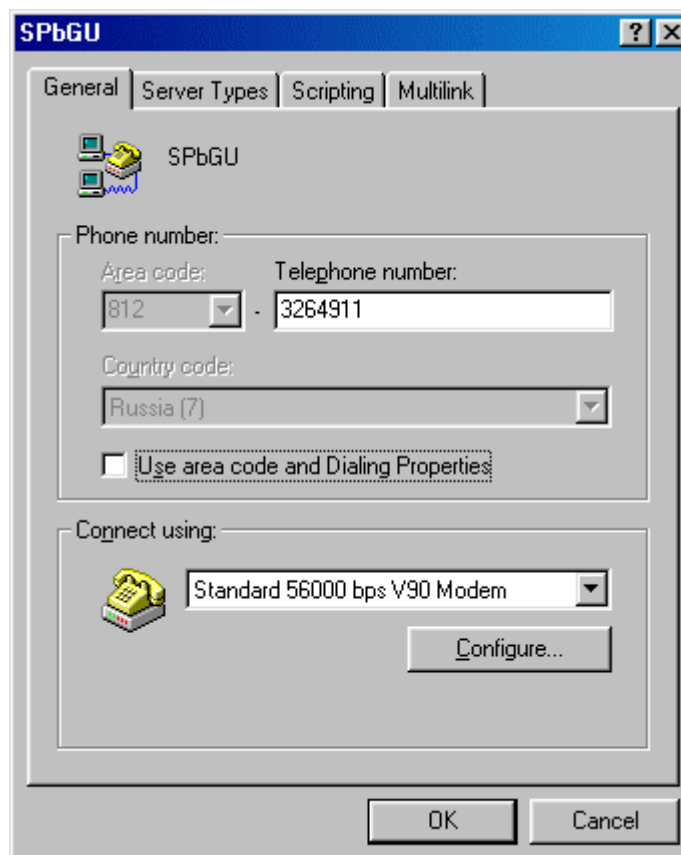
Pic. 5

2. Setting up the Dial-up connection

The Dial-Up connection you just created must have the correct properties set in order to connect to SPbGU. Right click on SPbGU icon you just made and click Properties (Picture. 6), (Picture. 7).

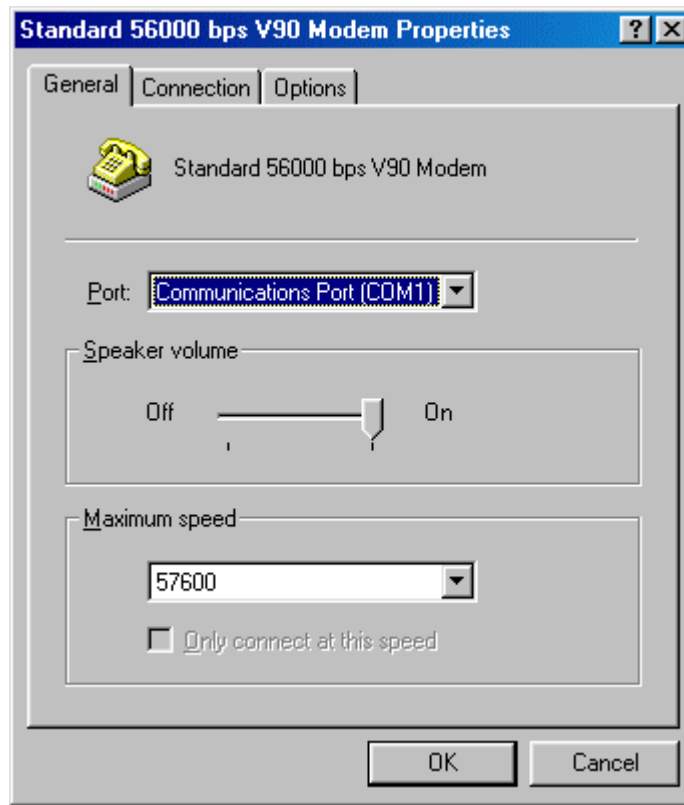


Pic. 6



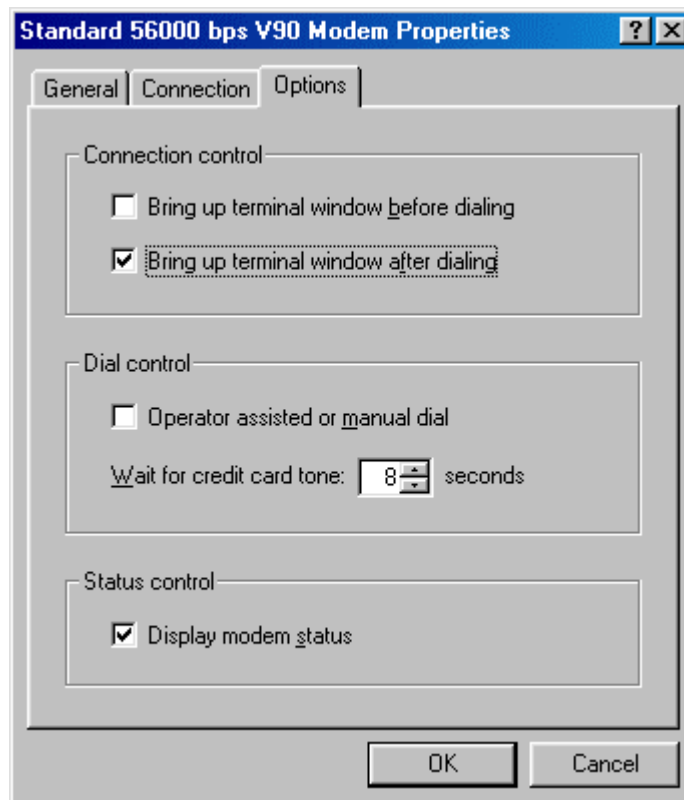
Pic.7

The General tab (Picture.7) shows the most important settings, such as the phone number, the area and country code and the modem that you use. Click Configure button. You will see the modem properties window (Picture.8)



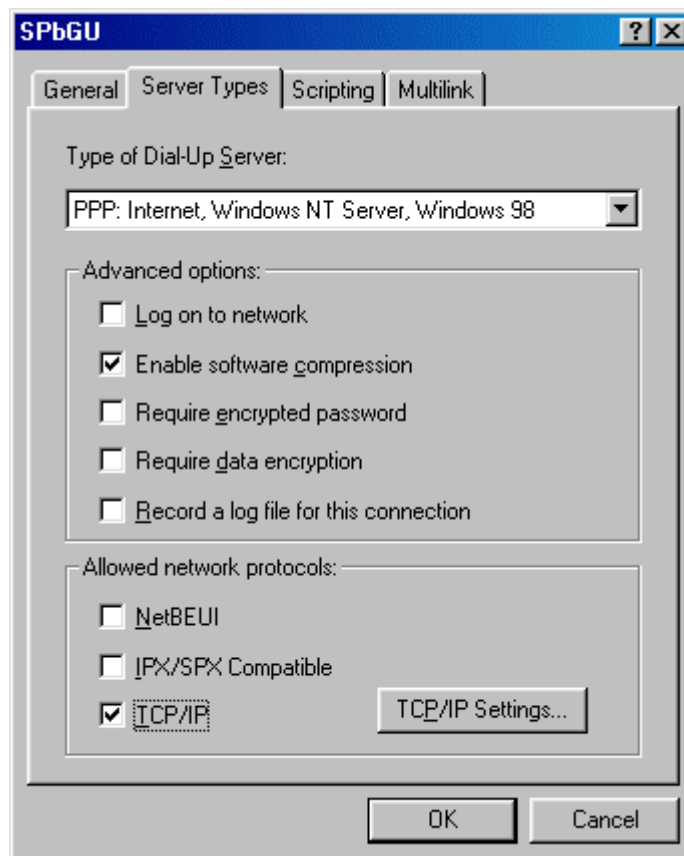
Pic.8

Select the Options tab (Picture. 9)



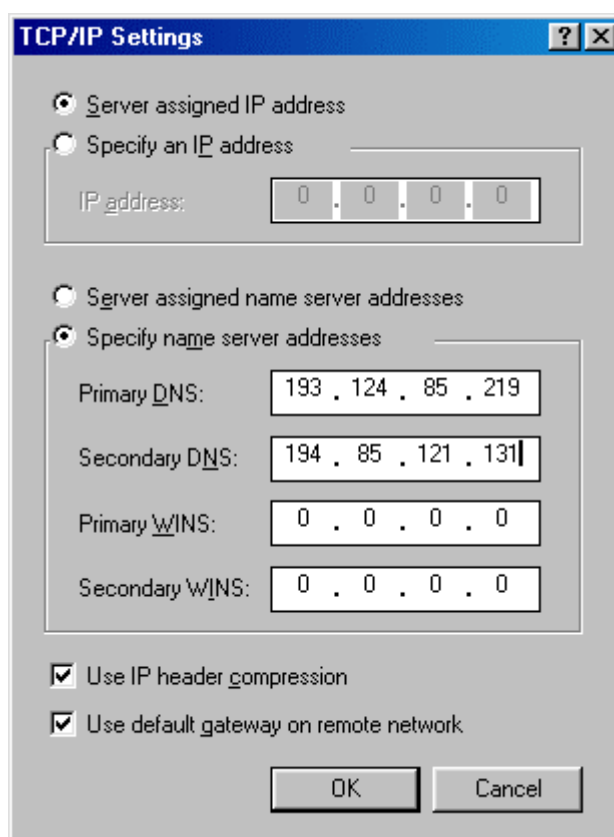
Pic. 9

ATTENTION! Make sure there is a check in the box next to "Bring up terminal window after dialing". There should be no check before "Bring up terminal window before dialing". Click on Ok, to go back to the General tab and then click on Server Types (Picture. 10).



Pic.10

At the Type of Dial-Up Server select (PPP: Internet, Windows NT Server, Windows 98). At the Advanced options mark Enable software compression And at the Allowed network protocols mark the TCP/IP protocol. Click on TCP/IP Settings button (Picture.11)



Pic.11

Select Server assigned IP address and Specify name server addresses.
 As a primary DNS type 193.124.85.219 and as a Secondary DNS type 194.85.121.131
 Use IP header compression and Use default gateway on remote network must both be marked.
 Now close all windows by pressing Ok and you can try to get connected.

If you clicked the **Bring up terminal window after dialing** check box in the previous section, a terminal window appears in which you type your logon information. After you type your user name and password, click **Continue** . The order in which you log on and the information that you have to provide may vary, depending on your ISP. Contact your ISP if you have any questions about the logon procedure.

3. Making a Connection to SPbGU

The following explains how to connect to SPbGU. **These steps will need to be followed whenever you want to browse the WWW, or access any other internet resource.**

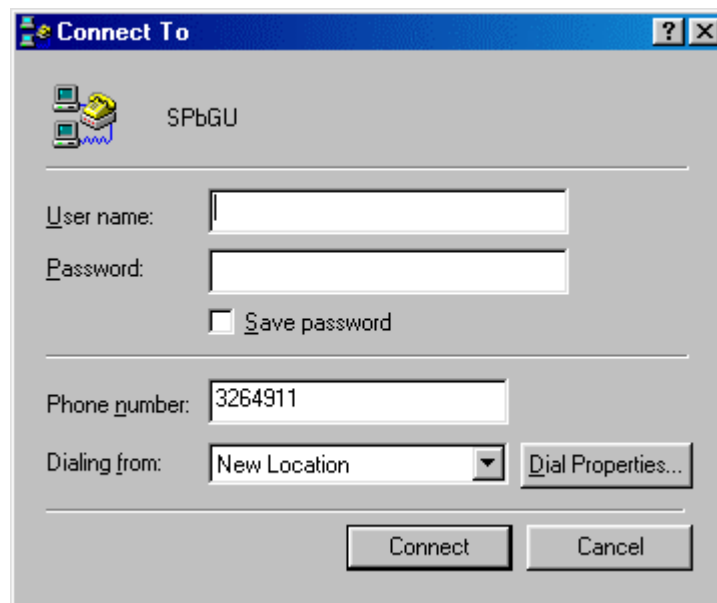


1. Double click on the **My Computer** icon *My Computer* , located on the Desktop.
2. The drives and three folders should be seen -- Control Panel, Printers, and



Dial-Up Networking .

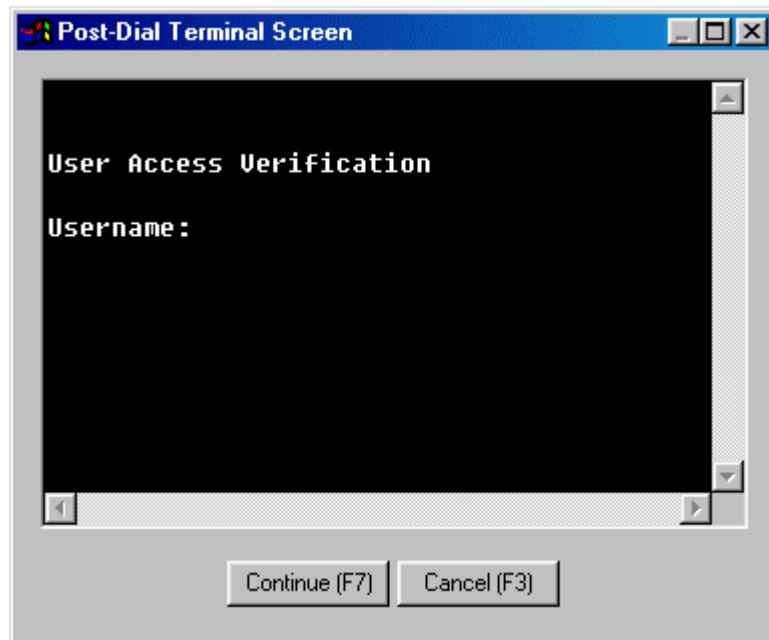
3. Double click on **Dial-Up Networking**.
4. A window with at least two icons will be displayed -- Make New Connection and the connection you made in the previous section. (The user in our example named the icon SPbGU. We will refer to the created icon as SPbGU for the remainder of these instructions.) Double click on **SPbGU**.
5. A dialog box will appear (Picture. 12). Click **Connect**.



Pic.12

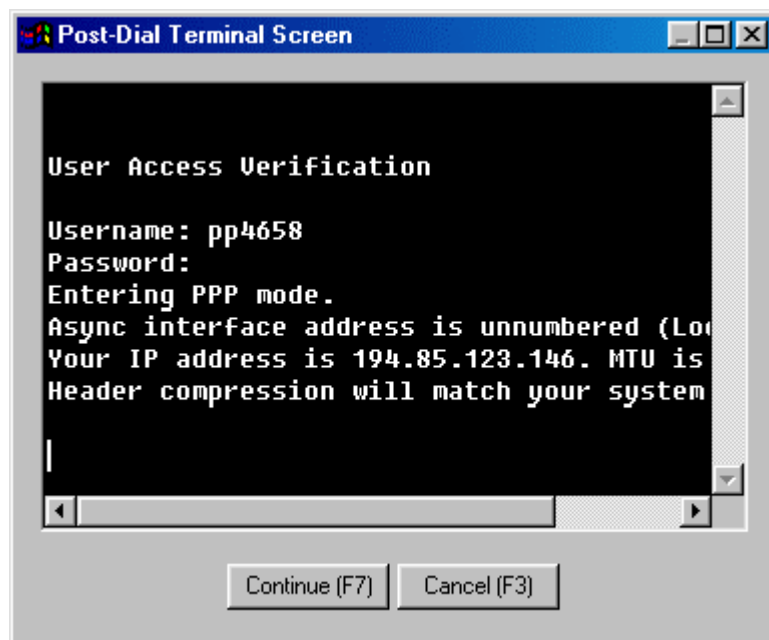
NOTE: The Username and Password fields must be left blank!

6. A dialog box will appear stating that Windows 98 is using the modem and dialing 326-4911. This will take approximately 30 seconds. When the connection is made, a Post Dial Terminal Screen will appear (Picture. 13). Type in your Username (pp**** see in User card) and press **enter**.



Pic.13

Then, type your Password (***** see in User card) and press **enter**.



Pic.14

You will see a data stream consisting of "garbage", or ASCII, characters (Picture. 14). This is nothing to worry about. It indicates that your modem and our modem bank are communicating correctly. When you see these characters press **F7**, or click the **Continue (F7)** button, at the bottom of the window.

At this point you are ready to use any Internet Winsock Compliant application you wish, including Internet Explorer, Netscape, Telnet and FTP.

When you are finished, double click on the small green icon, and then click the **Disconnect** on the Connection Uptime dialog box. This will hang up the modem and disconnect you from SPbGU.